



# SPECIALTY RETAILERS

Lighting Control & Design • Application Guide



# RETAIL STORES & LIGHTING CONTROLS

Retail stores require very specific control features. Controls must be easy to use, and at the same time flexible to meet seasonal schedule changes.

## Sequence of Operation:

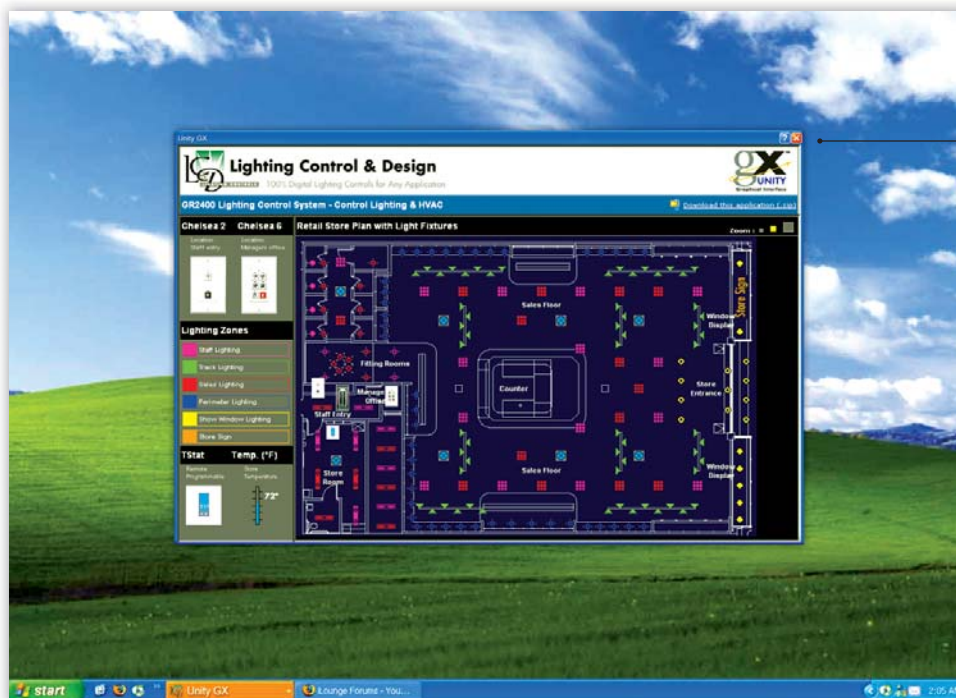
A manual switch near the employee entrance allows a limited number of the most efficient lights to be switched on.

This provides enough light for stocking, clean-up and paperwork. Sales lighting, store front lighting, signage, and HVAC are

switched on automatically five minutes before store opening.

At days end, HVAC and most lighting is sequenced off (HVAC set-back controls are available). The last employee to leave switches off the "entry level" lights or the lighting controls will do it automatically.

This simple approach can cut lighting and HVAC by 50%. All of this is backed up by our free lifetime factory dial-up programming and monitoring.

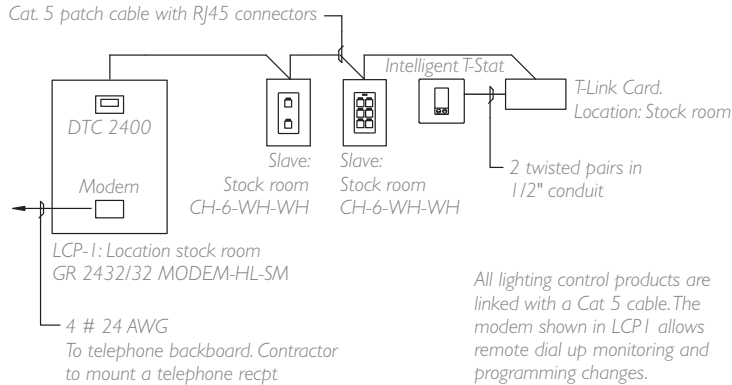


LC&D's Unity GX™ uses intuitive graphical controls and an easy-to-understand interface that makes managing lighting control system as straightforward as a point and click.

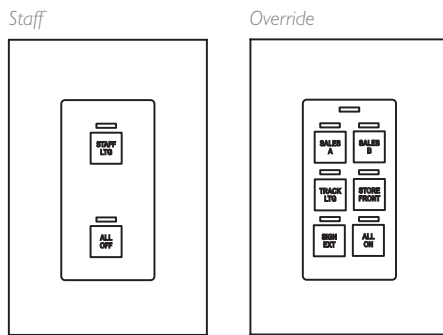
Import most all graphic styles, including .dxf, .dwg and .jpg files - pan and zoom without distortion or pixilation of bitmap-based graphics.

Unity™ allows system-wide access locally (at the DTC clock), and remotely (serial, internet, or dial-up connection) with real time status (ON/OFF).

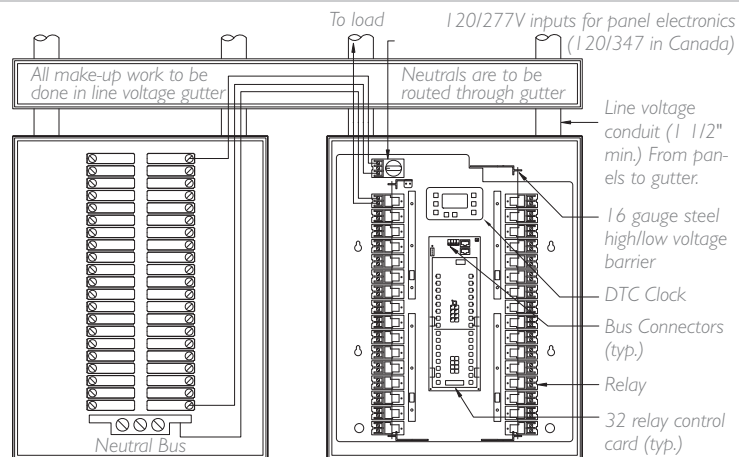
## Low Voltage - Single Line Drawing



## Chelsea™ DigitalSwitch



## Panel Installation



### Basic System

Relay panels or switches may be linked together with a single Cat. 5 cable with RJ45 connectors.

Only one master panel is required with a clock and modem. Additional panels would be "slave" panels (no clock or modem). LC&D Unity™ Lighting Control Software allows system-wide access locally (at the DTC clock), and remotely (serial, internet or dial-up connection).

### Switches

The Chelsea™ DigitalSwitch fits in a Decora™ style wall plate and comes with factory-engraved buttons. Chelsea switches are extremely flexible and may be programmed to meet any requirements from the DTC clock or remotely using our Unity™ software.

### Add a Thermostat

Add up to 32 Intelligent Thermostats through our T-Link™ card, to create a small Energy Management System. The T-Link™ allows remote access for multiple functions including:

- Set-back temp and time
- Real-time temp adjustments
- Local keypad adjustment limits
- Optional remote sensor

### Technical Support

LC&D recommends the following products for small retail stores:

- GR 2400™ relay panel
- Chelsea™ DigitalSwitch
- Intelligent Thermostat

# CUSTOMER SATISFACTION

Customer satisfaction is our #1 concern. It is a privilege to be considered for your project, and we prove it by offering support for every one of our customers that no competitor will ever match.

Each LC&D lighting control system comes with free dial-up programming for the life of the system. This is especially valuable to store owners who are often too busy to dial into stores and do their own schedule changes.

Our Technical Support department is just a phone call away to change seasonal schedules, adjust temperature settings, run diagnostics and more – all free of cost. LC&D systems are remotely accessed by our expert technicians using UNITY software to dial into outlets, and require no in-store programming.

We are always on stand-by to assist with all your needs. Our Engineering Assistance Department is available to assist the design process with general advice, best practice methods for code compliance, and/or even complete CAD drawings.

We'll even do a free energy analysis of your existing lighting control system to help you determine whether or not you are getting maximum benefits.

LC&D offers 24/7/365 support. Call us at 800-345-4448 to get the answers to your questions today.

## LIGHTING CONTROL & DESIGN

An Acuity Brands Company

905 Allen Avenue, Glendale, CA 91201  
Tel: 800-345-4448 • [www.lightingcontrols.com](http://www.lightingcontrols.com)