



# RESTAURANTS

Lighting Control & Design • Application Guide



# RESTAURANT LIGHTING & HVAC CONTROLS

**D**Restaurant lighting controls need to be easy to use and flexible enough to handle both last minute and seasonal schedule changes. The GR 2400 system offers the best solution for restaurant lighting and HVAC controls in a single, easy-to-use package.

1. Switch on kitchen, restrooms, and selected dining room lights at the Entry Switch.
2. Outdoor lighting (including signs) is scheduled to turn on at dusk through the DTC Clock. Patio Lighting may be programmed to come on at dusk and off at closing time.
3. Manually control any lights or scenes to extend automatic lighting schedules from the Master Override Switch, which is typically located in the manager's office.
4. Dining Room lights may be switched through our relay panel or dimmed through a dimming system. Lighting scenes in the dimming system may be scheduled through the GR 2400 system to respond to outdoor light levels or clock schedules (including astronomic schedules).

## Sequence of Operation:

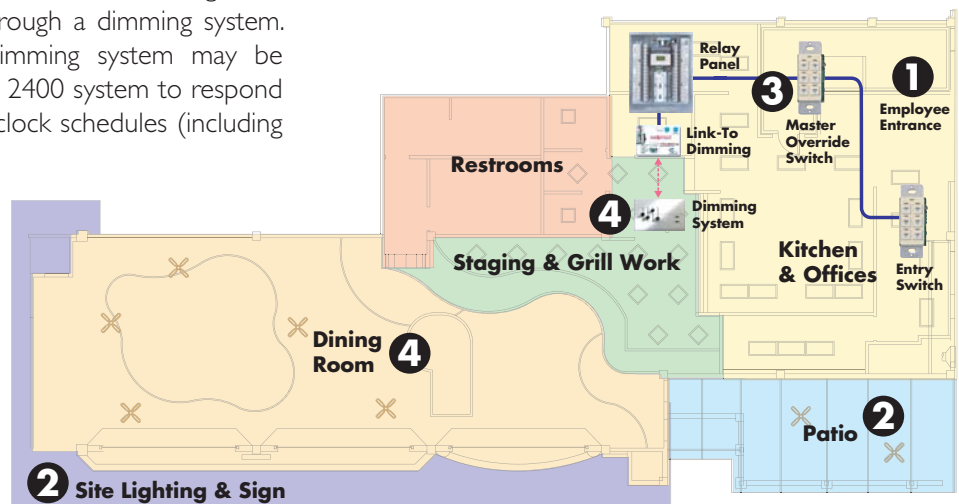
A) A manual switch near the employee entrance allows a limited number of the most efficient lights to be switched on, including kitchen lighting, some dining room lighting, and HVAC.

B) Dining room lighting, display lighting, signage, and remaining HVAC are switched on automatically per schedules in the DTC clock. Restaurants which require dimming can take advantage of LC&D direct digital interface with many dimming systems.

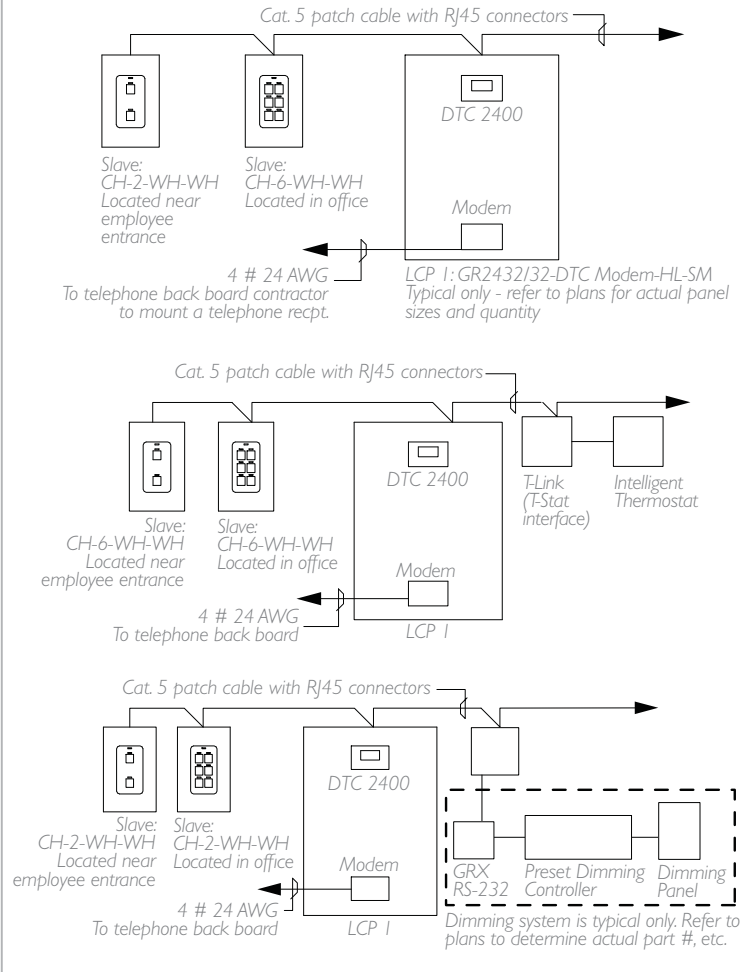
C) At closing, HVAC and most lighting is sequenced back to the "entry" level.

D) At days end the "entry switch" may be used to switch off remaining lights or the GR 2400 lighting control system will do it automatically - including dimming.

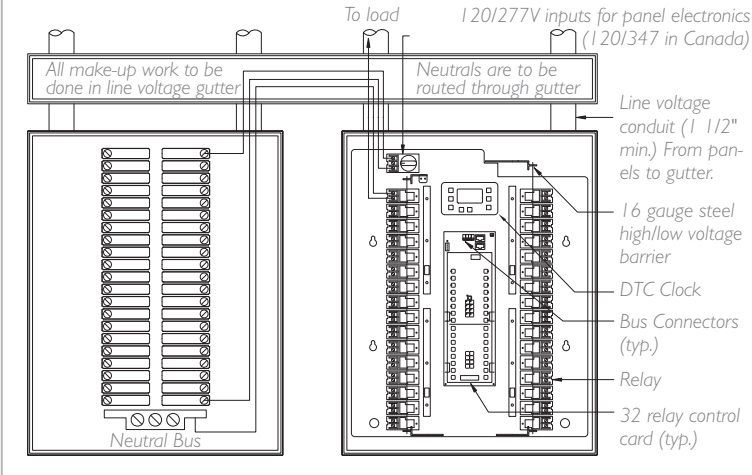
*This simple approach can cut lighting and HVAC by 50%. All of this is backed up by our free, lifetime factory dial-up programming and monitoring.*



## Basic System - Single Line Drawing



## Panel Installation



### Basic System

Additional switches or relay panels are linked with a Cat. 5 cable with RJ45 connectors. Only one master panel is required per system. Additional relay panels would be slave panels. Unity™ Lighting Control Software allows access to the lighting controls locally at the DTC keypad and remotely via modem in the master panel. LC&D offers free lifetime programming for all systems with a factory installed modem.

### Add HVAC Control

Up to 32 thermostats may be linked together through a single T-Link Card to create a small energy management system. The T-Link may be mounted in an LCP or externally in its own NEMA I enclosure.

### Add a Dimming System:

Add a complete dimming system from Synergy™, Lightolier™, or other dimming manufacturers. This creates a complete package with dimming, lighting control, and HVAC all in a single system.

### Technical Support

LC&D recommends the following products for restaurant applications:

- GR 2400™ Relay Panel
- The Blue Box™ LT
- Chelsea™ DigitalSwitch
- Dimming Panels

# CUSTOMER SATISFACTION

Customer satisfaction is our #1 concern. It is a privilege to be considered for your project, and we prove it by offering support for every one of our customers that no competitor will ever match.

Each LC&D lighting control system comes with free dial-up programming for the life of the system. This is especially valuable to store owners who are often too busy to dial into stores and do their own schedule changes.

Our Technical Support department is just a phone call away to change seasonal schedules, adjust temperature settings, run diagnostics and more – all free of cost. LC&D systems are remotely accessed by our expert technicians using UNITY software to dial into outlets, and require no in-store programming.

We are always on stand-by to assist with all your needs. Our Engineering Assistance Department is available to assist the design process with general advice, best practice methods for code compliance, and/or even complete CAD drawings.

We'll even do a free energy analysis of your existing lighting control system to help you determine whether or not you are getting maximum benefits.

LC&D offers 24/7/365 support. Call us at 800-345-4448 to get the answers to your questions today.

## LIGHTING CONTROL & DESIGN

An Acuity Brands Company

905 Allen Avenue, Glendale, CA 91201

Tel: 800-345-4448 • [www.lightingcontrols.com](http://www.lightingcontrols.com)